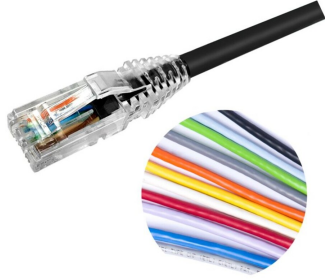


# NPC06UVDB



## NPC RJ45 Patch Cord, category 6, Unshielded, CM (PVC)

- High-performance patch cords exceeding industry standards supporting NETCONNECT channel specifications
- Standardized transparent, slim-line boots provides consistent patch cord appearance and supports highest density applications
- Colored clips are available to fit the transparent boot, eliminating the need of multiple colors for matching every jacket color
- Colored pull latch tabs are available for easier plug release handling from the modular jack

## Product Classification

<b>Regional Availability</b>	Asia   Australia/New Zealand   Latin America
<b>Portfolio</b>	NETCONNECT®
<b>Product Type</b>	Twisted pair patch cord
<b>Product Series</b>	NPC
<b>Ordering Note</b>	Cords < 1 m are valid elements for use in a channel or as an equipment interconnect but due to their limited length are not guaranteed to meet component compliance requirements that were developed to assess the quality of longer cords   Cords > 1 m are authorized for use in channels and are an effective standalone method used to connect active devices

## General Specifications

<b>ANSI/TIA Category</b>	6
<b>Cable Type</b>	U/UTP (unshielded)
<b>Conductor Type</b>	Stranded
<b>Interface, Connector A</b>	RJ45 plug
<b>Interface Feature, connector A</b>	Standard
<b>Interface, Connector B</b>	RJ45 plug
<b>Interface Feature, connector B</b>	Standard
<b>Jacket Color</b>	Black   Blue   Green   Orange   Red   Slate   White   Yellow
<b>Pairs, quantity</b>	4
<b>Transmission Standards</b>	IEEE 802.3bt Type 4   ISO/IEC 11801 Class E
<b>Wiring</b>	T568B

## Dimensions

<b>Cable Assembly Length Range (m)</b>	1 – 30
--	--------

# NPC06UVDB

---

<b>Cable Assembly Length Range (ft)</b>	1 – 100
<b>Cable Assembly Length Range (cm)</b>	15 – 999
<b>Cable Assembly Length Range (in)</b>	6 – 999
<b>Diameter Over Jacket</b>	5.97 mm   0.235 in
<b>Compatible Conductor Gauge, stranded</b>	24 AWG

## Material Specifications

<b>Insulation Material</b>	Polyethylene
<b>Material Type</b>	PVC

## Mechanical Specifications

<b>Plug Insertion Life, minimum</b>	750 times
-------------------------------------	-----------

## Environmental Specifications

<b>Operating Temperature</b>	-20 °C to +60 °C (-4 °F to +140 °F)
<b>Relative Humidity</b>	Up to 93%, non-condensing
<b>Environmental Space</b>	Non-plenum
<b>Flammability Rating</b>	CM
<b>Safety Standard</b>	UL 1863

## Packaging and Weights

<b>Packaging quantity</b>	1
---------------------------	---

## Regulatory Compliance/Certifications

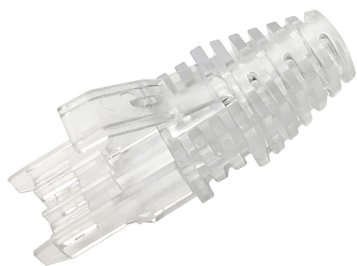
<b>Agency</b>	<b>Classification</b>
RCM	Compliant to electrical safety & telecommunications requirements



## Included Products

2843020-3 MP-6AU-Boot-59-1	–	Integrated Boot and Pair Manager for MP-6AU, size 59, transparent
6-2843007-1 MP-6AU-Plug-A-1	–	Modular Plug, Category 6A/6, Unshielded, Cond Insulation OD - 0.99mm, 100 pcs

# 2843020-3 | MP-6AU-Boot-59-1



Integrated Boot and Pair Manager for MP-6AU, size 59, transparent

## Product Classification

<b>Regional Availability</b>	Asia   Australia/New Zealand   EMEA   Latin America   North America
<b>Portfolio</b>	CommScope®
<b>Product Type</b>	Modular plug boot

## General Specifications

<b>Boot Feature</b>	Color-clip compatible   Pull-tab compatible   Slimline   Snagless
<b>Color</b>	Clear
<b>Compatible Plug Type</b>	Cat 6   Cat 6A

## Dimensions

<b>Compatible Cable Diameter, maximum</b>	6.2 mm   0.244 in
<b>Compatible Cable Diameter, minimum</b>	5.6 mm   0.22 in

## Packaging and Weights

<b>Included</b>	Strain relief
<b>Packaging quantity</b>	100
<b>Packaging Type</b>	Bag   Box

## Regulatory Compliance/Certifications

<b>Agency</b>	<b>Classification</b>
CHINA-ROHS	Below maximum concentration value
REACH-SVHC	Compliant as per SVHC revision on <a href="http://www.commscope.com/ProductCompliance">www.commscope.com/ProductCompliance</a>
ROHS	Compliant



# 6-2843007-1 | MP-6AU-Plug-A-1



Modular Plug, Category 6A/6, Unshielded, Cond Insulation OD - 0.99mm, 100 pcs

## Product Classification

<b>Regional Availability</b>	Asia   Australia/New Zealand   EMEA   Latin America   North America
<b>Portfolio</b>	CommScope®
<b>Product Type</b>	Modular plug

## General Specifications

<b>ANSI/TIA Category</b>	6   6A
<b>Cable Type</b>	Round, unshielded
<b>Conductor Type</b>	Solid   Stranded
<b>Interface</b>	RJ45
<b>Positions/Loaded Contacts</b>	8/8
<b>Termination Type</b>	IDC

## Dimensions

<b>Compatible Insulated Conductor Diameter, maximum</b>	1.09 mm   0.043 in
<b>Compatible Insulated Conductor Diameter, minimum</b>	0.89 mm   0.035 in
<b>Contact Plating Thickness</b>	1.27 µm
<b>Compatible Conductor Gauge, solid</b>	26-23 AWG
<b>Compatible Conductor Gauge, stranded</b>	26-23 AWG

## Electrical Specifications

<b>Current Rating, maximum</b>	0.75 A
<b>Insulation Resistance, minimum</b>	500 mOhm
<b>Safety Voltage Rating</b>	150 Vac

# 6-2843007-1 | MP-6AU-Plug-A-1

---

## Material Specifications

<b>Contact Base Material</b>	Phosphor bronze
<b>Contact Plating Material</b>	Gold
<b>Material Type</b>	Glass filled polycarbonate

## Mechanical Specifications

<b>Plug Insertion Life, minimum</b>	750 times
-------------------------------------	-----------

## Environmental Specifications

<b>Operating Temperature</b>	-10 °C to +60 °C (+14 °F to +140 °F)
<b>Relative Humidity</b>	Up to 93%, non-condensing
<b>Safety Standard</b>	UL 1863

## Packaging and Weights

<b>Packaging quantity</b>	100
<b>Packaging Type</b>	Bag   Box   Carton

## Regulatory Compliance/Certifications

<b>Agency</b>	<b>Classification</b>
CHINA-ROHS	Below maximum concentration value
REACH-SVHC	Compliant as per SVHC revision on <a href="http://www.commscope.com/ProductCompliance">www.commscope.com/ProductCompliance</a>
ROHS	Compliant

